



Process-Oriented Modeling and Infrastructure for Remedial Decision Support System

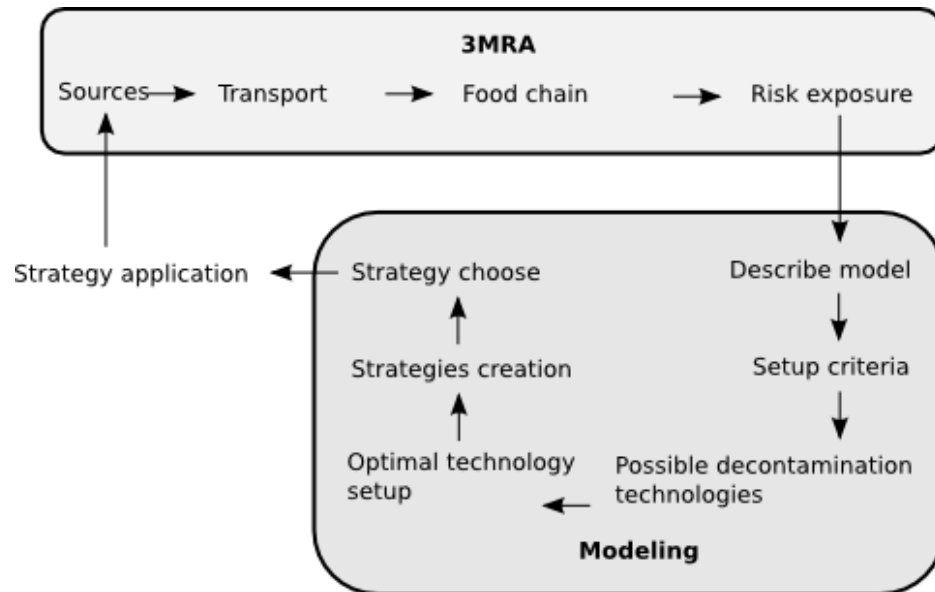


Jan Pavlovič
Masaryk University

Problem Definition

- Mutual project of U.S. EPA and Masaryk University
- Problem definition
 - We need a user friendly system that help environment specialist with process of making decision, which decontamination techniques are needed for cleaning hazardous waste site.
 - System has to reflect the process of decision making.
 - Solution needs to integrate into complex EPA processes.

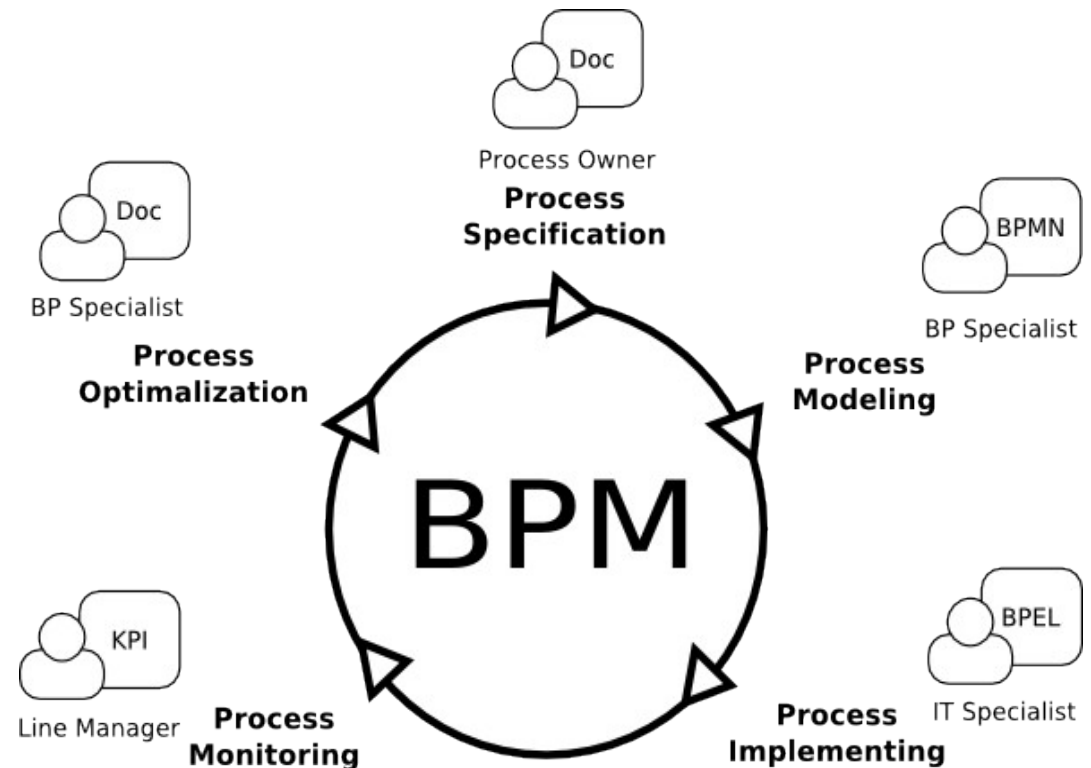
Suggested Solutions



- Design of Process-Oriented Infrastructure
- Design of Business Process Management System
- Apply it on Decision Support Application for Decontamination Strategy

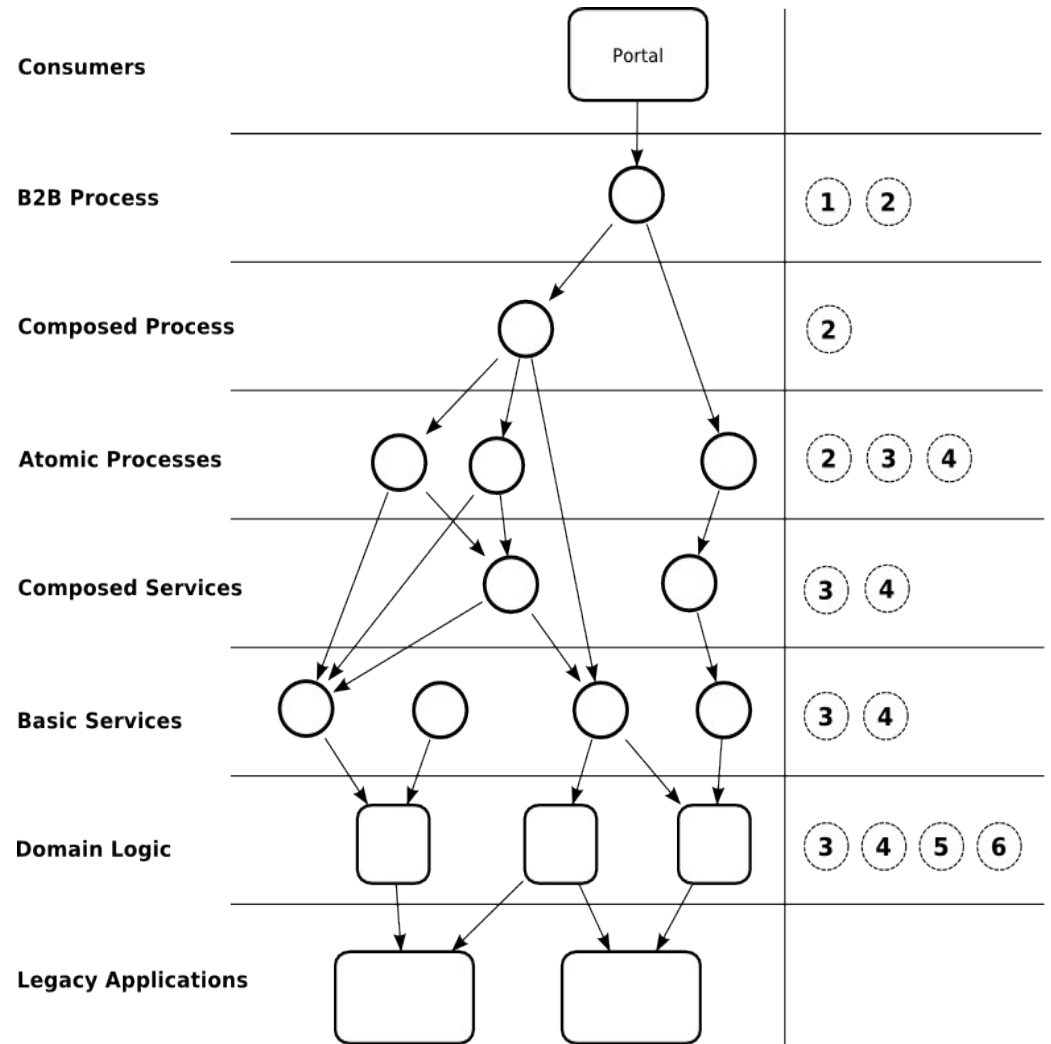
Business Process Management

- BPM is a subset of Computer Science
- Management discipline
- Win factors
 - Process Owner
 - KPI
 - Monitoring – BAM

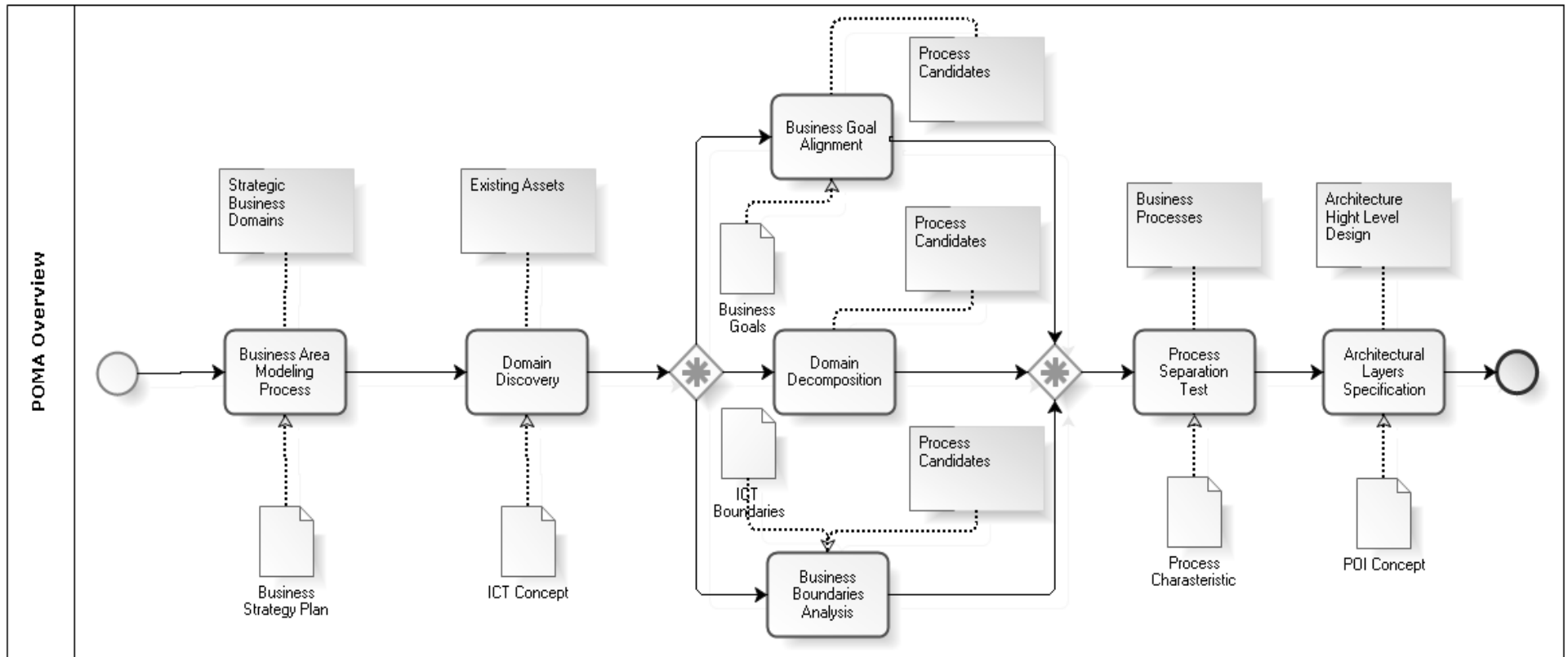


Process-oriented Modeling and Infrastructure

- Handling connections among services and processes
- Win-win strategy how to implement business process oriented infrastructure
- Methodology how to identify business process candidates and how implement them



POMA Life Cycle Flow



Case Study – Energy Calculator

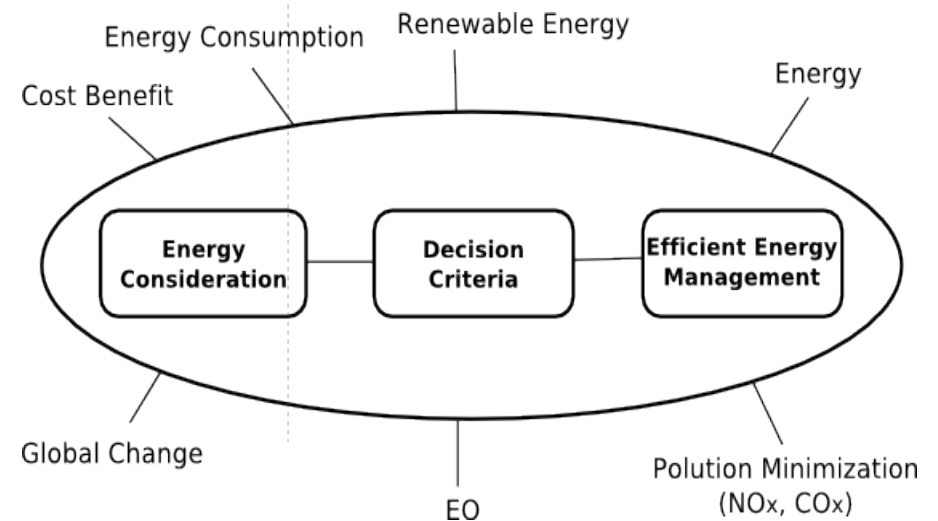
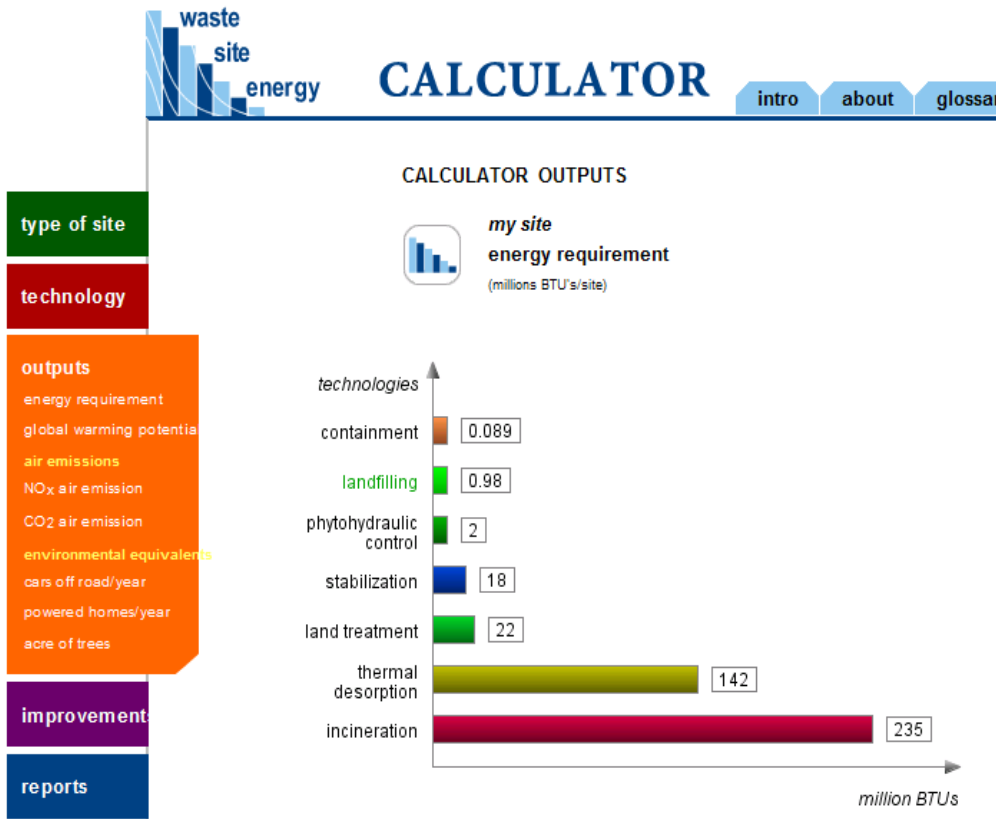
Quick help
Every input item has a quick help button. Simply move the mouse cursor over the question-mark to obtain information.

Top right tabs
Tabs on right top side of Calculator are informational. Calculator features and capabilities, and other useful information are presented. The logout button is situated here.

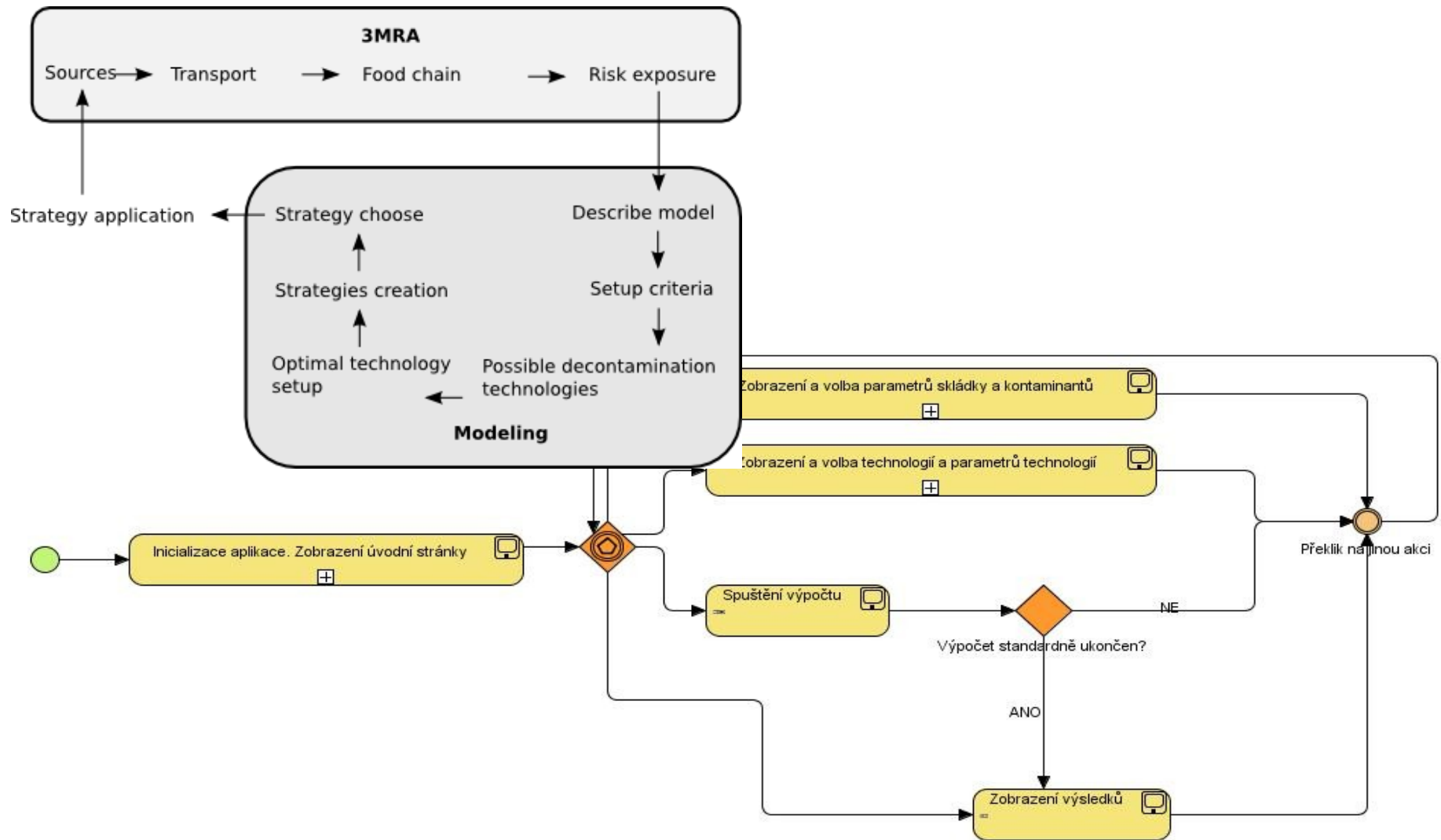
Language selection
The Calculator supports different languages selected via this link.

Form buttons
The Calculator does not require a user to know which step is follows or precedes the current operation. Just use Next or Previous. The color of the form button shows to which part of the Calculator the user will be moved.

Left main menu
Tabs on left side of Calculator contain all main functions specifying site data to generating output reports. The picture below illustrates that some tabs have subentries that are dynamically changed depending on technologies selected. Outputs and other subentries are static.



Remedial Process



Conclusion

- Goals
 - **[solved]** Design of Process-Oriented Infrastructure
 - **[solved]** Design of Business Process Management System
 - **[solved]** Apply it on Decision Support Application for Decontamination Strategy

Questions

pavlovic@fi.muni.cz